

**SPECIAL OFFER!**



Own either one  
of these  
instruments  
for **FREE!**  
See inside for more  
information.

**Act Now Before  
Promotional Prices Expire!**

HYBR0418

Copyright © 2018 Weber Scientific



**WEBER SCIENTIFIC**

2732 KUSER ROAD, HAMILTON, NJ 08691-1806



PRSRT STD  
U.S. POSTAGE  
**PAID**  
U.S. Post  
31601

# Ensure Food Safety and Extend Product Shelf Life

*Rapid cleaning validation tests*



**SPECIAL  
OFFER  
INSIDE!**

**WEBER SCIENTIFIC**

Hygiene monitoring swab systems from Hygiena® offer quick and easy ways to accurately monitor the cleanliness of food equipment surfaces to help ensure food safety and product quality.

## ATP Hygiene Monitoring Systems



### Key Design Features:

- Moisture-proof USB connection
- Removable read chamber design allows for easy cleaning
- large backlit screen
- Durable case for harsh environments
- Sealed keypad is splash-proof
- Runs on 2 x AA batteries
- Easy to navigate keypad
- Complete with stand and protective case

### EnSURE™ Multi-Parameter Luminometer

- One instrument for multiple quality tests
  - ATP Hygiene Monitoring
  - Allergen Control with SuperSnap™
  - Microbial Detection with MicroSnap™\*
- Rapid results
  - 15 seconds for ATP
  - 7 hours or less for microbes with MicroSnap™\*
- Sensitive detection levels
  - To 0.1 femtomoles of ATP with SuperSnap™
  - To 1-5 CFU for microbes with MicroSnap™\*
  - 2X more sensitive than SystemSURE Plus™
  - One year warranty

\*For more information on the MicroSnap microbial detection swabs visit [www.weberscientific.com](http://www.weberscientific.com)

| Item No. | Mfr Item No. | Description        | Qty Break | Your Cost          |
|----------|--------------|--------------------|-----------|--------------------|
| 3661-72  | ENSURE       | EnSURE Luminometer | 1<br>2+   | 1449.28<br>1250.00 |

## SPECIAL OFFER

Own either one of these instruments for **FREE!** Simply commit to purchase two hundred swabs per month for a full year and we'll give you an instrument at no charge. Please contact us for more information.



### SystemSURE Plus™ ATP Luminometer

- Detects to 1.0 femtomole of ATP
- Has most of the other features as the EnSURE instrument for ATP analysis
- One year warranty

| Item No. | Mfr Item No. | Description     | Qty Break | Your Cost          |
|----------|--------------|-----------------|-----------|--------------------|
| 3661-80  | SS3          | SystemSURE Plus | 1<br>2+   | 1301.37<br>1187.50 |

#### Precautionary note

Hygiene monitoring tests should be performed post-cleaning and pre-sanitization to verify cleaning effectiveness.

## ATP Swabs – All-in-one test swab detects low levels of ATP (Adenosine Triphosphate)

### SuperSnap™ is super sensitive

- High Sensitivity – 4X more sensitive than UltraSnap
- Used predominantly in food & beverage processing facilities as an allergen cross-contamination prevention tool or when dealing with difficult samples
- By incorporating SuperSnap into a prevention program, risks and issues are recognized in real time and immediate corrective action and preventative measures can be implemented before product overlays occur.
- Identify food residues at extremely low levels
  - Breaks through biofilms
  - Detects very small amounts of ATP and organic residues
  - Suitable for allergen monitoring – detects residues at levels down to 1 – 100 PPM, which is similar to the detection capabilities of specific allergen tests
- 100% recyclable plastics - low carbon footprint

### UltraSnap™ offers high sensitivity and is very cost effective

- High sensitivity – Detects 0.1-1 femtomole of ATP
  - For detection to 0.1 femtomole of ATP, use EnSURE™
  - For detection to 1 femtomole of ATP, use SystemSURE

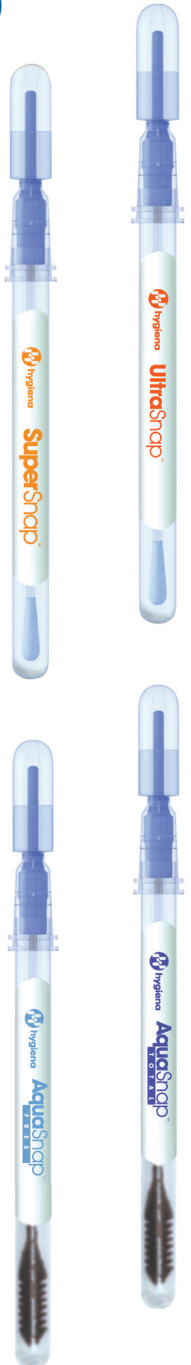
### AquaSnap™ Total Water Testing Device

AquaSnap Total measures both free ATP in solution and microbial ATP. The device contains a detergent to release ATP that is bound to microbial or organic matter and inside microbes. AquaSnap is easy to use, economical, and gives real time results. The specifically designed dipper tip collects 100 µl of water ensuring consistent sample collection.

### AquaSnap™ Free Total Water Testing Device

AquaSnap Free measures ATP that is free in solution. The difference between Total and Free ATP provides a measure of microbial contamination in the sample.

| Item No. | Mfr Item No. | Description                   | Qty      | Qty Break | Your Cost |
|----------|--------------|-------------------------------|----------|-----------|-----------|
| 3661-76  | SUS300       | SuperSnap                     | case/100 | 1         | 236.21    |
|          |              |                               |          | 2+        | 221.45    |
| 3661-75  | US2020       | UltraSnap                     | case/100 | 1         | 210.00    |
|          |              |                               |          | 2+        | 197.21    |
| 3661-95  | AQ-100X      | AquaSnap TOTAL                | case/100 | 1         | 226.60    |
|          |              |                               |          | 2+        | 212.44    |
| 3661-96  | AQ-100FX     | AquaSnap FREE                 | case/100 | 1         | 226.60    |
|          |              |                               |          | 2+        | 212.44    |
| 3661-91  | PCD4000      | Positive/Negative Control Set | each     |           | 257.50    |
| 3661-92  | CK25         | Positive Control Kit          | pack/25  | 1         | 92.70     |
|          |              |                               |          | 2+        | 76.06     |
| 3661-87  | SSCC03       | Swab Cooler                   | each     |           | 36.05     |



# SureTrend™

SureTrend™ data analysis software allows you and all your stakeholders to monitor plant hygiene whenever and wherever you want, and it's free with every Hygiena™ luminometer.

Use SureTrend to:

- Track test results
- Quickly identify problem areas
- Analyze sanitation effectiveness
- Automatically generate reports
- Maintain records for regulatory compliance
- Facilitate continuous improvement



**See everything you need on the dashboard.** The SureTrend dashboard appears at launch and can be configured so you can monitor results in the areas that need attention in seconds. The dashboard displays Pass/Caution/Fail results and failed test results by location or plan. Trend graphs help you confirm corrective actions were taken, anticipate fail results, and react to contamination sooner.

### Chart your way to perfect hygiene.

SureTrend makes charting easy with over 30 pre-programmed reports. Choose any one of the template reports commonly used in the food and beverage industry, and then you can customize and save reports to your favorites. Export PDFs for easy sharing or open data sets in Excel® for further data analysis.



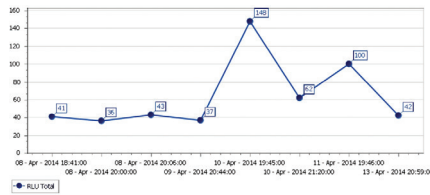
### Build your network.

Install SureTrend on a network server and link devices, departments, and even plants for convenient communication and collaboration.



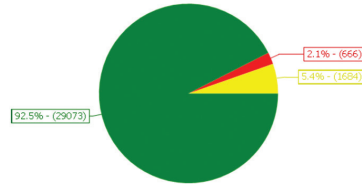
### Trending

Use SureTrend to identify cleaning trends, contamination spikes, and corrective actions. Take control of your program and confidently reduce repeat cleaning sessions and downtime for faster production and reduced costs.



### Tracking

Monitor equipment, track changes to cleaning procedures, and generate reports for management or record keeping to facilitate continuous improvement.



### Create a global location directory for your HACCP program.

The global location directory allows HACCP coordinators to create a global list of all locations and test plans that should be tested in a facility, making them accessible to all plants. By standardizing test locations, facility comparison is easier than ever.



### Let us randomize your plan.

Let SureTrend generate test plans by randomly selecting locations from a list and giving you statistical coverage over a given time period. Randomization is an ideal feature for facilities that can't test every location every day, but want to monitor 100% of locations.

## Non-Instrument Swab Systems

### SpotCheck™ Plus Glucose and Lactose Residue Test

SpotCheck Plus detects invisible amounts of glucose or lactose, a constituent of practically all foods and beverages. With SpotCheck Plus you find out nearly instantly if any food residue is left on a surface, allowing corrective action to be taken on the spot.

- "If it turns green it isn't clean."
- Results in under one minute
- Detects down to 2.5 µg for D-glucose or 5.0 µg for lactose in 60 seconds.
- Store at refrigerated temperatures for 18 months or at room temperature for 4 weeks.

**Free Samples Available Upon Request**

#### HOW IT WORKS

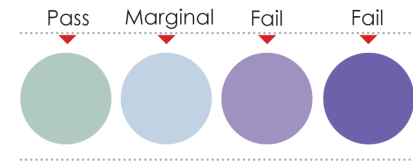


| Item No. | Description   | Qty      | Qty Break | Your Cost |
|----------|---|----------|-----------|-----------|
| 3660-12  | SpotCheck Plus glucose/lactose device, for all dairy and most food products | pack/100 | 1-4       | 180.00    |
|          |   |          | 5+        | 159.38    |

### PRO-Clean™ Rapid Protein Food Residue Test

PRO-Clean detects any protein residue. A positive reagent will turn purple. The color change provides a semi-quantitative measure of the surface cleanliness. The more contamination present, the quicker the color changes to purple and the darker the color.

- Results in 1 – 10 minutes
- Sensitivity:
  - Detects 80 µg protein after 1 minute
  - Detects 50 µg protein after 5 minutes
  - Detects 20 µg protein after 10 minutes
  - Disregard any color change after 10 minutes
- Store at refrigerated temperatures
- 18 month shelf life (from date of manufacture)



**Free Samples Available Upon Request**

| Item No. | Qty      | Qty Break | Your Cost |
|----------|----------|-----------|-----------|
| 3660-70  | pack/100 | 1-4       | 200.85    |
|          |          | 5+        | 180.77    |



## Allergen Tests



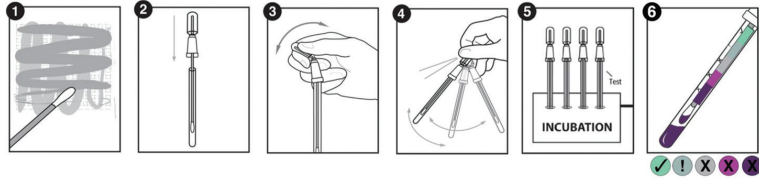
### AllerSnap™ High Sensitivity Protein Residue Test

AllerSnap detects protein residues with extraordinary sensitivity within 15-30 minute incubation. A positive will turn purple. The color change provides a semi-quantitative measure of the surface cleanliness. The more contamination present, the quicker the color change to purple and the darker the color. AllerSnap quickly validates the hygiene of a surface, allowing immediate corrective action to be taken if necessary.

- Detects 3 µg protein after 30 minutes at 37°C or 15 minutes at 55°C
- Suitable for allergen monitoring
- Store at refrigerated temperature
- 18 month shelf life (from date of manufacture)

 Free Samples Available Upon Request

#### AllerSnap Instructions



| Item No. | Description                          | Qty      | Qty Break | Your Cost     |
|----------|--------------------------------------|----------|-----------|---------------|
| 3660-75  | AllerSnap                            | case/100 | 1-4       | <b>228.15</b> |
|          |                                      |          | 5+        | <b>205.34</b> |
| 4161-80  | Digital Incubator with 12 well block | each     |           | <b>299.75</b> |

### AllerFlow Gluten Surface Residue Test

AllerFlow Gluten is a rapid and convenient test for detection of gluten residue on surfaces as part of an allergen control program. Combining Hygiene's convenient sample collection swab design with classic lateral flow technology, AllerFlow Gluten makes gluten testing easier than ever before. Unlike other kits that contain several components, AllerFlow Gluten only consists of two parts – a sample collection device and a lateral flow cassette. The convenient sample collection swab device contains pre-measured extraction buffer for consistent results with minimal handling. After collection, the sample is poured directly into the lateral flow cassette fill well and results appear within 10 minutes.

- Sensitive to 5 µg/swab (5 ppm) gluten within 10 minutes
- Specific to the toxic fraction of gluten from wheat, barley, rye, and oat
- No cross-reactivity with soy, rice, or corn
- Up to 15 month shelf life at room or refrigerated temperatures (2 – 25 °C)

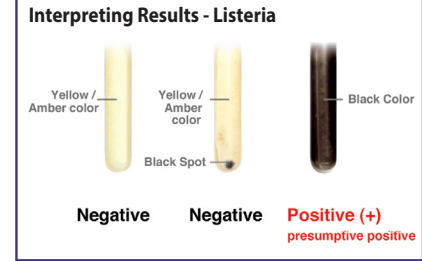
| Item No. | Description      | Qty      | Qty Break | Your Cost     |
|----------|------------------|----------|-----------|---------------|
| 3660-77  | AllerFlow Gluten | case/100 | 1-4       | <b>334.75</b> |
|          |                  |          | 5+        | <b>309.00</b> |

## Pathogen Rapid Environmental Tests

### InSite™ Listeria Environmental Listeria Species Test

InSite Listeria is an easy-to-use, self-contained, environmental Listeria species test. Each device contains a chromogenic liquid media formulated with antibiotics, growth enhancers, and color-changing compounds specific to the growth of Listeria species. Simply swab the test area and wait. A change in color after 24-48 hours of incubation is considered presumptive positive. No expensive lab equipment is required and no additional sample handling of the sample is necessary.

- Test in-house, save valuable time, results in just 24-48 hours
- When Listeria species is present in a sample, the liquid media changes color from amber to black
- Self-contained test - no transfers minimizing the chance of contamination. Easy-to-use Snap-Valve™ technology - snap & squeeze
- Only equipment required is a 37°C ± 1° incubator or send to lab
- Large 2.5 inch foam swab for maximum sample pickup
- 12 month shelf life at refrigerated temperatures

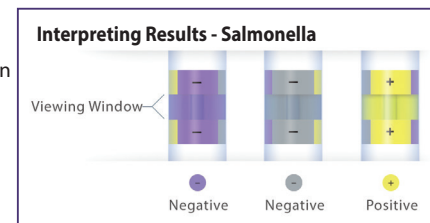


| Item No. | Description                          | Qty      | Qty Break | Your Cost     |
|----------|--------------------------------------|----------|-----------|---------------|
| 4161-40  | InSite Listeria test kit             | pack/50  | 1         | <b>360.50</b> |
|          |                                      |          | 2+        | <b>321.88</b> |
| 4161-45  | InSite Listeria test kit             | pack/100 | 1         | <b>557.92</b> |
|          |                                      |          | 2+        | <b>464.93</b> |
| 4161-80  | Digital Incubator with 12 well block | each     |           | <b>299.75</b> |

### InSite™ Salmonella Environmental Salmonella Test

InSite Salmonella is an easy-to-use, self-contained, environmental Salmonella species test. Each device contains a liquid medium formulated with growth enhancers and chromogenic compounds selective for Salmonella species. Simply swab the test area and incubate! A change in color after 24-48 hours of incubation is considered presumptive positive for Salmonella species. No expensive lab equipment is required.

- Delivers results in 24 - 48 hours
- Self-contained reagent- no transfers minimizing the chance of contamination
- Color-changing device is easy to interpret, from purple to vivid yellow
- Only equipment required is a 37 ± 1 °C incubator - reduces materials and labor
- 9 month shelf life at refrigerated temperatures



| Item No. | Description                          | Qty     | Qty Break | Your Cost     |
|----------|--------------------------------------|---------|-----------|---------------|
| 4161-38  | InSite Salmonella test kit           | pack/50 | 1         | <b>360.50</b> |
|          |                                      |         | 2+        | <b>321.88</b> |
| 4161-80  | Digital Incubator with 12 well block | each    |           | <b>299.75</b> |